

May 2017

K-State Research and Extension Finney County



4-H Youth Clover Connection

Investing in the Future of Kansas 4-H

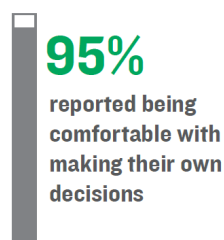
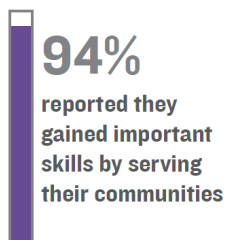
The Kansas Program Fee:

Beginning with the 2017-18 4-H year, Kansas 4-H will implement a \$15 per member program fee for all community club and independent 4-H members. Cloverbuds will not be charged a program fee. The program fee will be paid at the time of enrollment within 4HOnline. A detailed explanation of the fee with Frequently Asked Questions is available and we have sent it to all 4-H families via email. Please be sure to read it closely, as it will answer many of your questions about the payment process. We will continue to communicate details about Investing in the Future of Kansas 4-H and the Kansas 4-H Program Fee throughout the summer months. Please read your emails and newsletters for more info.

Funds generated will strengthen our program priorities of volunteer development, project support and program enhancement. We understand you will have questions about methods of payments, how and when to pay, and we encourage you to read the *"Investing in the Future of Kansas 4-H; a Guide to the 4-H Program Fee."* We feel this guide will be most helpful in answering many of your questions.

Our #1 goal is for Kansas 4-H to continue to enrich the lives of its youth members, families and adult volunteers. We want the implementation of the program fee to be as easy and smooth as possible.

Is the Kansas 4-H Program worth your investment? YES!



4-H Highlights

- The 4-H Program Fee
- 4-H Council News
- Cloverbud Club
- 4-H Fair Entry Process
- Camp Information
- Livestock Information
- Horse Information
- Finney Co. Fair Updates
- Club Corner
- Summer Reading Petting Zoo
- Calendar

**THANK YOU!!
FINNEY COUNTY
PARENTS, 4-H
VOLUNTEERS,
FINNEY COUNTY
4-H
CLUBS AND
MEMBERS,
FOR YOUR
CONTINUED
SUPPORT!**

ATTENTION ALL 4-Hers!!

Cloverbud Club

If you have a child between the ages of 5 & 6, this is the time to start getting them involved in 4-H through the Cloverbud Club! Come learn about 4-H, meet some of our junior leaders, interact with other kids, participate in games/crafts, and most importantly... have fun!! Our meeting will be **Tuesday, May 16th at 6:00PM in the 4-H Building**. For more information, please feel free to contact the Extension Office at 620-272-3670, or email Tayla at tlcannella@ksu.edu.

Cloverbud Meetings will resume in October to kick start the new 4-H year!



4-H Council Meeting: Monday, May 22, 2017, 7PM, 4-H Building

Finney County Fair Entry Process

Entries will be accepted beginning June 1st.

- 1) Go to the following FairEntry website: <https://finney-county.fairentry.com>. You should see the "2017 Finney County Fair" text and logo on the main page.
- 2) Log-in using your 4-HOnline username and password. There will be a separate log-in screen for users who already have a 4-HOnline profile. (Contact the Finney County Extension Office if you forgot your password or need help logging in).
- 3) Once successfully logged in, follow the steps on the screen to make your entries in each department.
- 4) If entering in both 4-H & Open Class, you can make all entries once you log-in.

Helpful Hints:

"4-H Static" includes the following project areas: Cloverbuds, Demos/Talks, Educational Displays, Energy Management, Forestry, Geology, Entomology, Home Environment, Photography, Shooting Sports, Space Tech, Visual Arts & Crafts, and Woodworking.

Friday, June 30th is the deadline for livestock stall reservations & entries. (4-H & Open Class). Livestock Insurance and stall fees will be collected.

Friday, July 7th is the deadline for entries for the following 4-H projects: photography consultation judging, food & nutrition consultation judging, clothing construction & fashion revue, horse/horse waiver, rabbits, poultry, arts & crafts consultation, demonstrations & illustrated talks. Requests for display space for BOTH 4-H & Open Class.

4-H Summer Camps



Discovery Days: May 30 - June 2, 2017

We will be traveling to Manhattan on May 30th and returning on June 2nd. There will be 2 youth and 1 adult attending this year's event. Attendees, as the event gets closer, please be on the lookout for an email with travel times and details, dress code, what to pack and housing information. I look forward to traveling with you for Discovery Days!

Heart of Kansas Camp: June 7-10, 2017

We will be traveling with 27 campers and 7 counselors to Rock Springs 4-H Center on June 7th and returning on the 10th. If you are registered, please be on the lookout for a packet of information in your email. It will have all of the travel information, what to pack, activities, dress code and housing. We look forward to having you attend camp this year!

Camp Lakeside: June 8-9, 2017

We will be traveling with 5 campers and 1 counselor to Camp Lakeside in Scott City on June 8th and returning on June 9th. This will be a very fun camp. Attendees, as the event gets closer, please be on the lookout for an email with the travel times and details, dress code, what to pack and housing information.

4-H Campference: June 27-30, 2017

- 4-H Campference is for youth ages 12-14 (before January 1, 2017), and will be held June 27-30 at Rock Springs 4-H Center. Participants will experience the feel of a conference, while enjoying the 'camp' activities Rock Springs 4-H Center has to offer. This is a great transitional opportunity, as these tweens go from being a camper to attending educational conferences. 4-H Campference will feature workshops about opportunities in the 4-H program and how to better interact with others. Participants will meet other youth from around the state of Kansas.
 - Registration is available at the following [link](#).

If for some reason you are registered, yet unable to attend any of these camps, please let Tayla know as soon as possible. Refunds may not be an option.

Please submit payment for the following camps
NO LATER THAN MAY 15th!
 (Lakeside Camp, Heart of Kansas Camp, & Campference)

**Finney County 4-H
 Foundation offers
 25% reimbursement
 of registration fees
 to 4-H Camps.**

Livestock Information

Livestock Premium Auction Requirements

NO 4-H MEMBER SHALL BE ALLOWED TO PARTICIPATE IN THE PREMIUM AUCTION unless they have first met the requirements during the current 4-H calendar year (October 1st–September 30th): Attend a minimum of four (4) regular 4-H club meetings AND at least one of the following:

1. Present a project talk at a 4-H Club Meeting
2. Participate in Finney County 4-H Club Days
3. Actively participate in 4-H Ambassadors or Junior Leaders
4. Hold an office in your club
5. Lead a community service project

This change/addition to the rules is to become effective beginning with the 2017 County Fair (the October 1, 2016 through September 30, 2017 4-H Year). All attendance and participation requirements must be verified by the 4-H Club Leaders.

Note: This will NOT disqualify youth from showing livestock at the fair, ONLY selling an animal at the Premium Auction.

2017 Small Livestock Tagging Dates:

Sheep, Swine, Goat, Bucket Calf Second Chance Tagging will take place on Monday, May 8th and Tuesday, May 9th from 5-7PM in the Show Arena. This will be the absolute last chance to have your county fair animals tagged.

Tagging Information:

- ◆ All Market and Breeding small animal livestock are required to be tagged, identified, and recorded by Tuesday, May 9th.
- ◆ All Finney County market animals need to be tagged with an official Kansas 4-H EID Tag. These tags are needed to show at the Kansas State Fair and Kansas Junior Livestock Show.
- ◆ A Finney County Declaration Form for 4-H/FFA Livestock, needs to be completed at the time of tagging.
- ◆ If you need to co-nominate tagged livestock, this can be done by completing a Household Nominations Form. Youth will determine which individual animal(s) they will exhibit once they submit a Finney Co. Fair Livestock entry and stall request form, by June 30th.
- ◆ Tags will cost \$2.75/tag for Swine, Sheep, and Goat tags.
- ◆ Beef & Bucket Calf tags cost \$3.50/tag.

Livestock Information

2017 Finney County Spring Show

Save the date for the 2017 Finney County Spring Show! The Finney County Spring Show will be held on Friday, May 19th and Saturday, May 20, 2017. Swine will show on Friday. Sheep, Goats, and Beef will show on Saturday. Information is available on the Finney County Extension webpage.

Livestock Declaration Forms Due May 15th!

Kansas State Fair & Kansas Junior Livestock Show Nomination

2017 Youth Livestock Nomination and Entry Deadlines

Kansas State Fair (KSF) and Kansas Junior Livestock Show (KJLS)

AGE REQUIREMENTS: Kansas State Fair: Only Kansas 4-H members who were 9 years of age but not yet 19 years of age before January 1 of the current year are eligible to compete in this division. KJLS: All Kansas 4-H members that have reached the age of 7 before January 1st of the show year will be eligible to participate at the Kansas Junior Livestock Show.

Entry	Required Materials for Nomination	Cost to Nominate	Nomination Declaration*	Nomination Deadline	Show Entry Deadline	Registration Papers
Market Steers	Declaration form*, Market Beef Nomination Form*, sealed DNA Hair Sample envelope*, EID tagged, & postmarked by May 1.	\$8	Required every year	May 1	KSF – July 15 KJLS – August 15	Required for breed classes.
Market Heifers**	Declaration form*, Market Beef Nomination Form*, sealed DNA Hair Sample envelope*, EID tagged, & postmarked by May 1.	\$8	Required every year	May 1	KSF – July 15	N/A
Commercial (Crossbred) Heifers	Declaration form*, Commercial Heifer Nomination Form*, Permanent Tattoo, sealed DNA Hair Sample envelope*, EID tagged, & postmarked by June 15.	\$8	Required every year	June 15	KSF – July 15 KJLS – August 15	N/A
Registered Breeding Heifers	No.	N/A	N/A	N/A	KSF – July 15 KJLS – August 15	In exhibitor's name by June 15.
Market Lambs	Declaration form*, Market Lamb/Commercial Ewe Nomination form*, sealed DNA Hair Sample envelope*, EID tagged, scrapie tag #, & postmarked by June 15.	\$8	Required every year	June 15	KSF – July 15 KJLS – August 15	N/A
Commercial Ewes (Wether Dams)	Declaration form*, Market Lamb/Commercial Ewe Nomination form*, sealed DNA Hair Sample envelope*, EID tagged, scrapie tag #, & postmarked by June 15.	\$8	Required every year	June 15	KSF – July 15 KJLS – August 15	N/A
Registered Breeding Ewes	No.	N/A	N/A	N/A	KSF – July 15 KJLS – August 15	In exhibitor's name by July 1.
KSF Market Hogs/ KJLS Barrows***	Declaration form*, Swine Nomination form*, sealed DNA Hair Sample envelope*, EID tagged, Youth PQA+ Certification, ear notches, & postmarked by June 15.	\$8	Required every year	June 15	KSF – July 15 KJLS – August 15	In exhibitor's name by June 15.
Purebred/Pedigreed Breeding Gilts	No.	N/A	N/A	N/A	KSF – July 15 KJLS – August 15	In exhibitor's name by June 15.
Commercial Breeding Gilts	Declaration form*, Swine Nomination form*, sealed DNA Hair Sample envelope*, EID tagged, Youth PQA+ Certification, ear notches, postmarked by June 15.	\$8	Required every year	June 15	KSF – July 15 KJLS – August 15	N/A
All Meat Goats****	Declaration form*, Meat Goat Nomination form*, sealed DNA Hair Sample envelope*, EID tagged, scrapie tag #, & postmarked by June 15.	\$8	Required every year	June 15	KSF – July 15 KJLS – August 15	N/A

* The Nomination Declaration form and specie nomination forms are available at www.YouthLivestock.KSU.edu. Declaration Forms are due at the time of nomination. Official tags for all species, and official DNA Hair Sample Envelopes are available from your local Extension Office.

** There is no market heifer show at KJLS.

*** For pedigreed market barrows, ear notches on registration papers must match the pig's ear notches to be able to show.

**** No commercial doe show at KSF; ALL market and breeding meat goats must be nominated to show (no registered breeding doe show at KSF or KJLS).

*****Health papers are only required for KSF, for all species.

Horse Information

SOUTHWEST DISTRICT HORSE SHOW

Save the date for the Southwest District Horse Show. It will be held on **Thursday, June 29th** in Dodge City.

SOUTHWEST SPECTACULAR HORSE SHOW

Save the date for the Southwest Spectacular Horse Show. It will be held on **Saturday, July 8th** at the Finney County Fairgrounds. Flyer coming soon!

HORSE LEVEL TESTING

The Kansas 4-H Horse Standard of Excellence consists of four achievement levels (I, II, III, IV), each of which contains three sections: knowledge, leadership, and horsemanship skill attainment. Once participants successfully pass the required sections, they will receive certification of achievements and be granted the right to advance to the next level.

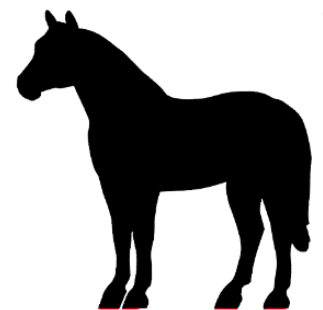
Intermediate (ages 10 to 13) youth who wish to participate at the District and/or State horse show must have successfully met the requirements of all three sections of Achievement Level I prior to the entry deadlines for their District show. Showmanship and Halter class participants must pass the first two sections of Achievement Level I, plus the Groundwork portion of the skill test prior to their District qualifying 4-H Horse Show entry deadline.

Senior (ages 14 to 18) youth who wish to participate in the District and/or State horse show must complete all three sections of Achievement Level II prior to the entry deadline for their District show. Showmanship and Halter class participants must pass the first two sections of Achievement Level II, plus the Groundwork portion of the Level I skill test prior to their District qualifying 4-H Horse Show entry deadline. Senior youth who wish to participate in the 2-year-old snaffle bit futurity and the 3-year-old futurity projects must be Achievement Level II certified prior to the May 1 nomination deadline.

Contact the Extension Office to schedule a time to complete your test.

FINNEY COUNTY FAIR HORSE SHOW

The Finney County Fair Horse Show will be held on Saturday, July 22nd. This show will NOT include seed events. Speed events will be held separately on Thursday, July 27th. See Finney County Fair Schedule for full details.



Finney County Fair

Superintendents Needed!!

Adult Superintendents:

If you are interested in becoming a superintendent in one or more project areas, we would love to have your leadership for this year's Finney County Fair. 4-H and Open Class superintendent opportunities are available in the following areas:

⇒ Cloverbuds, Demonstrations/III. Talks, Duct Tape, Educational Displays, Energy Management, Entomology, Fashion Revue/Clothing, Fiber Arts, Crops, Flowers, Foods, Food Preservation, Gardening, Models/Blocks/Legos, Pets, Photography, Poultry, Rabbits, Space Technology, Visual Arts & Crafts, and Woodworking.

Junior Superintendents:

We are currently looking for Junior Superintendents for this year's Finney County Fair! We would like to have 4-Hers present at check-in times, during judging, and to help clean up during the Finney County Fair. For livestock projects, you would help pass out ribbons, hand out or collect cards during the show. We would advise you to become a superintendent in an area that you will not be exhibiting; this is especially true for livestock projects.

If you are interested, please contact Tayla at the Finney County Extension Office and let me know what areas you would like to help with. You may also fill out a sheet and return it to the Finney County Extension Office **by May 31st**. The phone number at the office is 620-272-3670, I will respond to texts at 719-571-0514, or email tlcannella@ksu.edu.

Project Areas Available:

⇒ Beef, Cloverbuds, Demonstrations/III. Talks, Duct Tape, Educational Displays, Energy Management, Entomology, Fashion Revue/Clothing, Fiber Arts, Crops, Flowers, Foods, Food Preservation, Gardening, Goats, Horses, Models/Blocks/Legos, Pets, Photography, Poultry, Rabbits, Sheep, Space Technology, Swine, Visual Arts & Crafts, and Woodworking.

Thank you to those of you who have continued to serve as adult or junior superintendents! The Finney County Fair would not be possible without your help and support!



Club Corner



Finney Flyers

The Finney Flyers April meeting was called to order on the 2nd at 4:00 p.m. by Vice-President Keirstyn Hartman at the Finney County 4H Building. Roll Call was answered by: 14 members, 1 community leader and 4 parents & guests. Officers gave their reports and all were approved as read or submitted.

Kourtney Cole shared the following dates: 4-H enrollment deadline is May 1st. There will be a Shutterbug meeting on May 6th. May 19th/20th is the Finney County Spring Show.

Connie Gross gave the Community Leaders report and noted that 4H needs 2 kids to attend the Chamber of Commerce Breakfast on May 17th at 7 a.m. to give reports about 4-H. Shirt designs for the Finney County Fair were shared. Tagging dates are as follows: April 22 from 8-12 with a meal and clinic following and May 8th/9th.

There are changes in the fair schedule for this year so everyone needs to be aware and double check dates and times. All fair entries are online. Some early dates that families need to know are: July 18th: Buymanship and July 21st: Demonstrations.

The club voted to reimburse Connie for the \$33 bowling costs from March. Miles Combs gave a presentation about his years and projects in 4-H. Kynadee Ramsey led the song, "If You're Happy and You Know It" and recreation was held outside after the meeting.

Host for this month was the Langdon/Combs family. The next club meeting will be held on May 7th at 4 p.m.

Sherlock Strivers

The Sherlock Strivers 4-H Club met Sunday, April 2, 2017, at Holcomb Elementary.

21 members and 14 parents were present. Kyle Hammond called the meeting to order and Katie Mongeau read the minutes from the March meeting. The club members said the Pledge of Allegiance and the 4-H Pledge.

Under old business, the club discussed upcoming community service projects, Livestock Quality Assurance Training dates, and upcoming camps.

Under New business, members were informed of tagging dates and the Finney County Livestock Clinic and Spring Show. Horse ID papers will be due at the Extension Office by May 1. Market Beef Nominations for the state fair and KJLS are also due May 1. Members enrolled in photography were informed of the Shutterbug Zoo Clinic, and all members discussed changes for this year's fair. Braden Robinson talked to the club about his Bucket Calf project. Some of his calves are orphans from Clark County, where a wild fire caused many ranchers to lose their cows. Members of our club decided to donate money to Meade County's 4-H clubs to help them care for several of the Bucket Calves they have taken on.

Several members then gave Project Talks. The projects this month included Space Tech, Shooting Sports, Poultry, Energy Management, and Swine.

The next meeting will be May 7 at Holcomb Elementary.

Summer Reading Petting Zoo - June 24th

We need your help with the Summer Reading Program's Annual Petting Zoo at the Finney County Public Library on Saturday, June 24, 2017. Set up will begin at 9:30AM and the petting zoo will be from 10AM - Noon. 4-Hers are encouraged to bring their goats, sheep, swine, bucket calves, rabbits or poultry for the petting zoo. We would also like to have a project fair, so bring any of your projects to display and promote 4-H. Please contact Tayla at the Extension Office if you plan on helping with this event.



Calendar of Events

May

- 1 Add/Drop Deadline
- 2 Livestock/Pork Quality Assurance
- 8-9 Small Livestock Tagging
- 15 Lakeside & HOK Camp payment due
- 16 Cloverbud Club Meeting
- 19-20 Finney Co. Spring Show
- 22 4-H Council Meeting
- 29 Memorial Day—Office Closed
- 30 Discovery Days
Wildcat Sewing Camp

June

- 1-2 Discovery Days
Wildcat Sewing Camp
- 6 HOK Counselors to Rock Springs
- 7-10 Heart of Kansas Camp @ Rock Springs
- 8-9 Lakeside Camp @ Scott Lake
- 15 Nominations due for KSF/KJLS
- 24 Summer Reading Petting Zoo
- 29 SW District Horse Show
- 27-30 4-H Campference

July

- 4 Independence Day—Office Closed
- 8 Southwest Spectacular Horse Show
- 18 Clothing Construction, Fashion Revue
Fiber Arts Judging
- 21 Demonstrations & Ill. Talks Contest
- 22 Horse Show & Pet Show
- 24-30 Finney County Fair

K-STATE

Research and Extension



Finney
County

K-State Research & Extension Finney Co. Extension Office

501 South 9th St.
PO Box 478
Garden City, KS 67846
620-272-3670
620-2723576 fax
fi@listserv.ksu.edu

Questions about 4-H? Please contact:

Tayla Cannella
County Extension Agent,
4-H Youth Development
620-272-3670
719-571-0514
tlcannella@ksu.edu

Make the 4-H Connection on the WEB

Finney Co. Extension 4-H Infor- mation

www.finney.ksu.edu

Learn more about the Kansas 4-H Adventure at

www.kansas4-H.org

[Finney County K-State Research & Extension Facebook](#)—Link

National 4-H Council

www.fourhcouncil.edu

National 4-H Volunteer Resource Site

www.4hvolunteersusa.org

Check Out Extension Facebook Page

Keep up with Finney County K-State Research & Extension Program by clicking "LIKE" and follow the programs in 4-H, Family and Consumer Science and Agriculture on our Facebook page

[Finney County Extension
Facebook](#)



We're on the web!

www.finney.ksu.edu



K-State Research and Extension is an equal opportunity provider and employer. K-State Research & Extension is committed to making its services, activities, and programs accessible to all participants. If you have special requirements due to a physical, vision, hearing disability, or dietary restriction, please contact the Finney County Extension at 620-272-3670 or fi@listserv.ksu.edu